

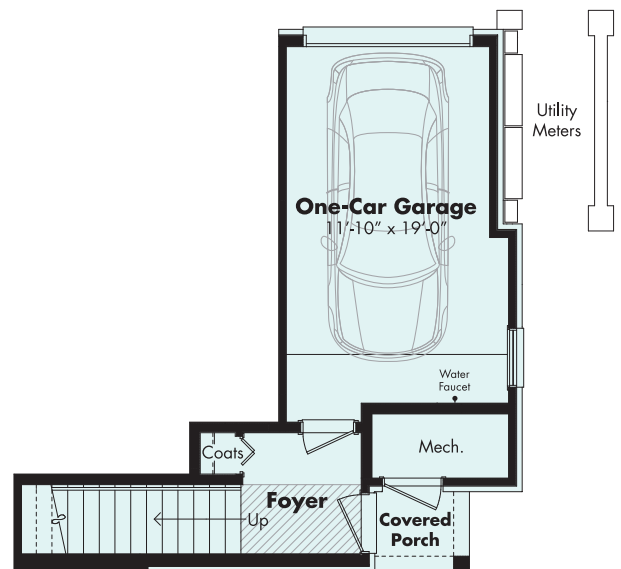
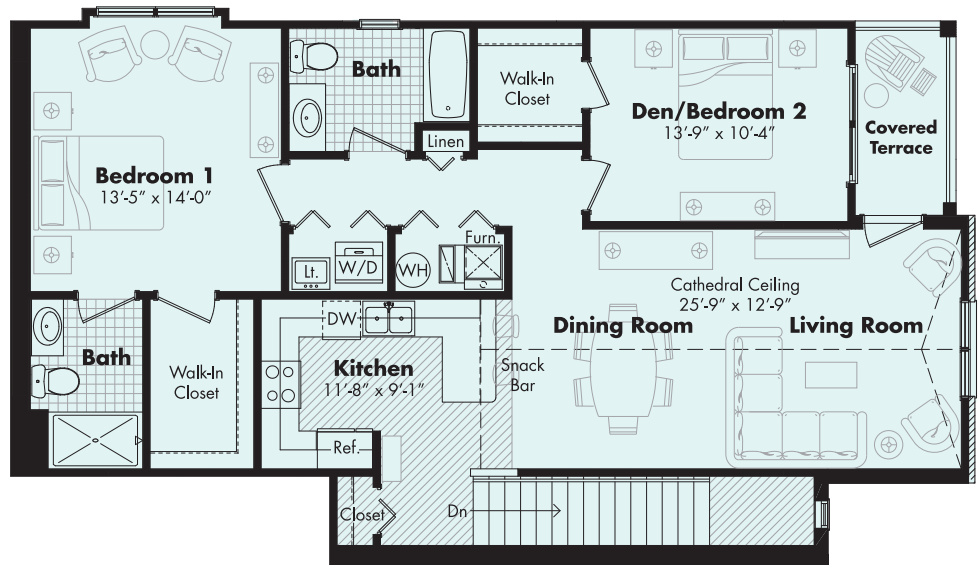


**BLOSSOM CREEK**

# THE CRILLON 1,324 SF

2 BEDROOM + 2 BATH + 1 CAR GARAGE

- Main level covered entry porch leads to foyer and the single story living area
- Attached garage provides convenient access to your home
- Washer/dryer plus laundry tub conveniently placed in hallway
- Spacious master bedroom complete with private bath and walk-in closet
- Second bedroom features a large walk-in closet with access to covered terrace
- Second guest full bathroom complete with tub
- Stylish kitchen amenities and snack bar with space for dining
- Dramatic cathedral ceilings in living room and dining area
- Covered terrace entry from living room and second bedroom



11/27/18P  
**BLOSSOM CREEK OAKLAND TWP, MICHIGAN 48306**

PLEASE NOTE: Room dimensions, materials, design features, finishes and specifications are subject to change without notice or obligation. Renderings and photographs are intended to provide a general "look and feel" and are not intended to represent the finished product.

**MOCERI**

STRUCTURE · INTEGRITY · TRADITION®

*Michigan's Legendary Dream Builder*