

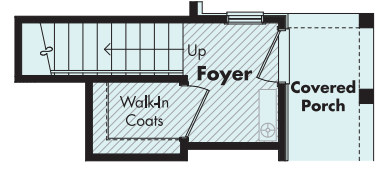
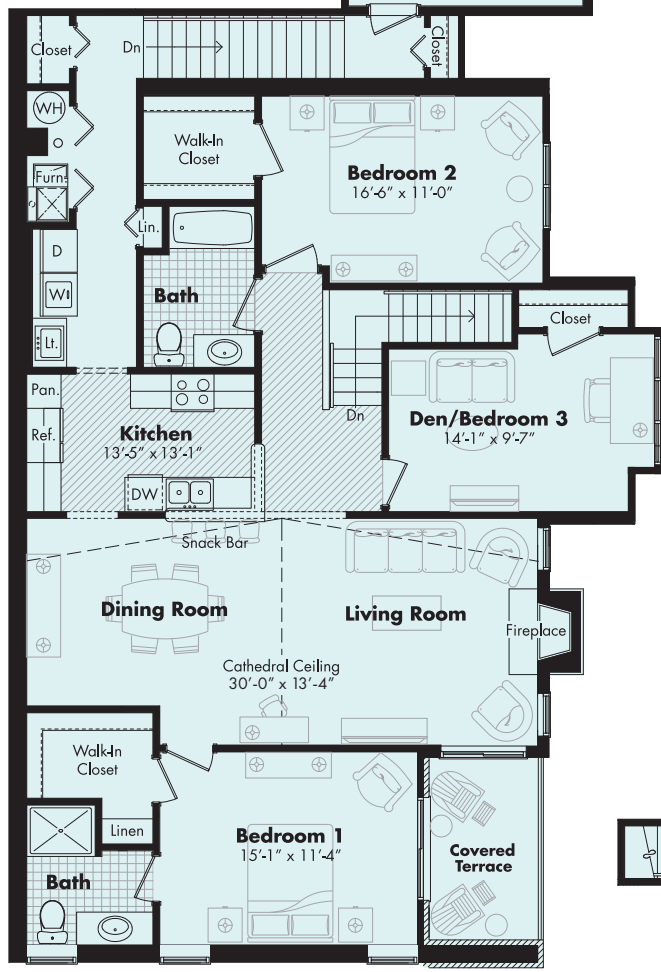
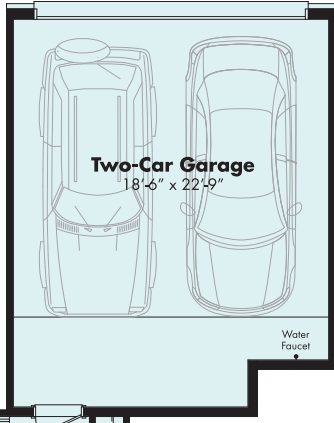


BLOSSOM CREEK

THE BASTIEN 1,743 SF

3 BEDROOM + 2 BATH + 2 CAR GARAGE

- Main level covered entry porch leads to foyer and the single story living area
- Attached garage provides convenient access to your home
- Generous laundry just off the kitchen includes a full-size washer/dryer plus laundry tub
- Master bedroom complete with private bath, walk-in closet and access to a covered terrace
- Second bedroom features a large walk-in closet and convenient access to guest bathroom
- Third bedroom or den area has a closet
- Second full guest bathroom adjacent to second and third bedroom
- Stylish kitchen amenities and snack bar with space for dining
- Dramatic cathedral ceilings in living and dining area featuring a cozy gas fireplace



11/27/18P
BLOSSOM CREEK OAKLAND TWP, MICHIGAN 48306
 PLEASE NOTE: Our intention is to comprehensively represent the finished product, but specifications and features are subject to alterations without notice or obligation.

MOCERI
 STRUCTURE · INTEGRITY · TRADITION®
 Michigan's Legendary Dream Builder