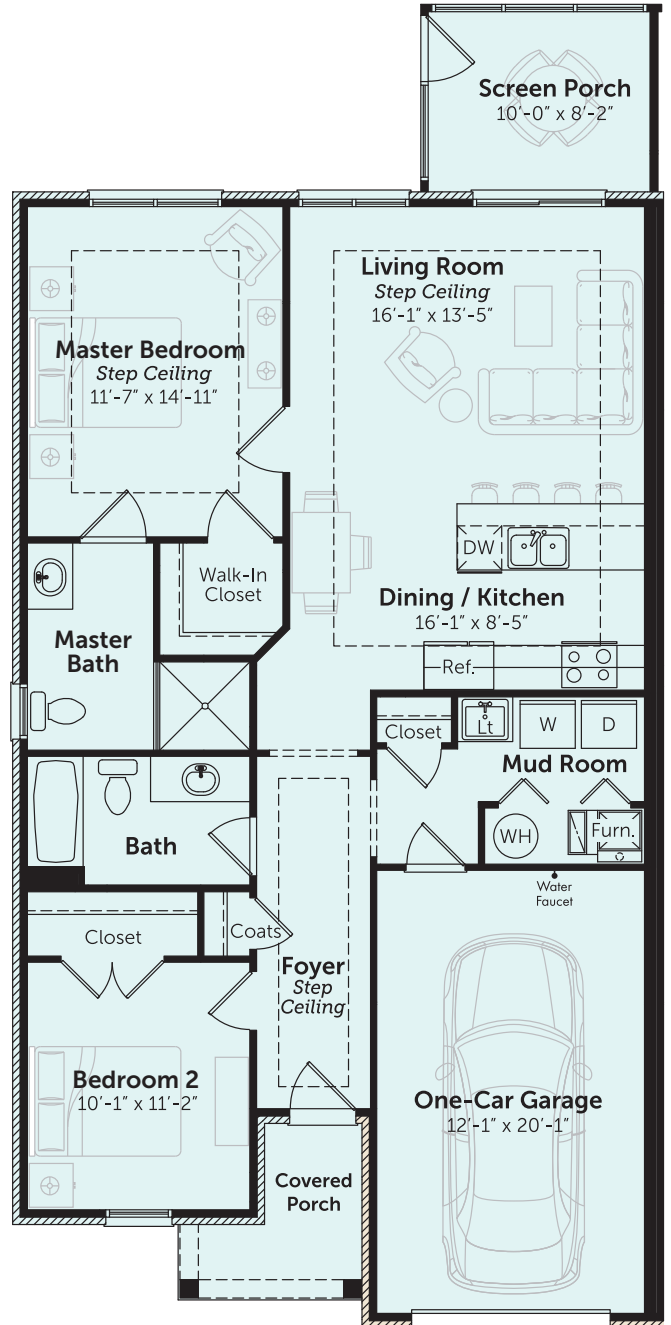




THE RANCH 1,100 SF

2 BEDROOM + 2 BATH + 1 CAR GARAGE

- Covered front porch that opens to a dramatic foyer entry hall
- Attached garage provides convenient access to your home
- Generous laundry/mud room just off the garage includes a full-size washer/dryer plus laundry tub
- Private 10' x 8' screened porch
- Master bedroom with impressive step ceiling complete with walk-in closet and private bath
- Second bedroom includes a spacious closet
- Full guest bathroom with tub off the foyer
- Open-concept kitchen with striking cabinetry, countertops, snack bar and space for dining
- Living area with unique stepped ceiling and door wall to porch



11/27/18P

BLOSSOM CREEK OAKLAND TWP, MICHIGAN 48306

PLEASE NOTE: Room dimensions, materials, design features, finishes and specifications are subject to change without notice or obligation. Renderings and photographs are intended to provide a general "look and feel" and are not intended to represent the finished product.

MOCERI

STRUCTURE · INTEGRITY · TRADITION®

Michigan's Legendary Dream Builder